

CATALOG  
2025

**keu**

**FAMILY & EVOQUE**



003 **INTRO**



004 **KEU FAMILY & EVOQUE**

005 BATHROOM

006 BEDROOM

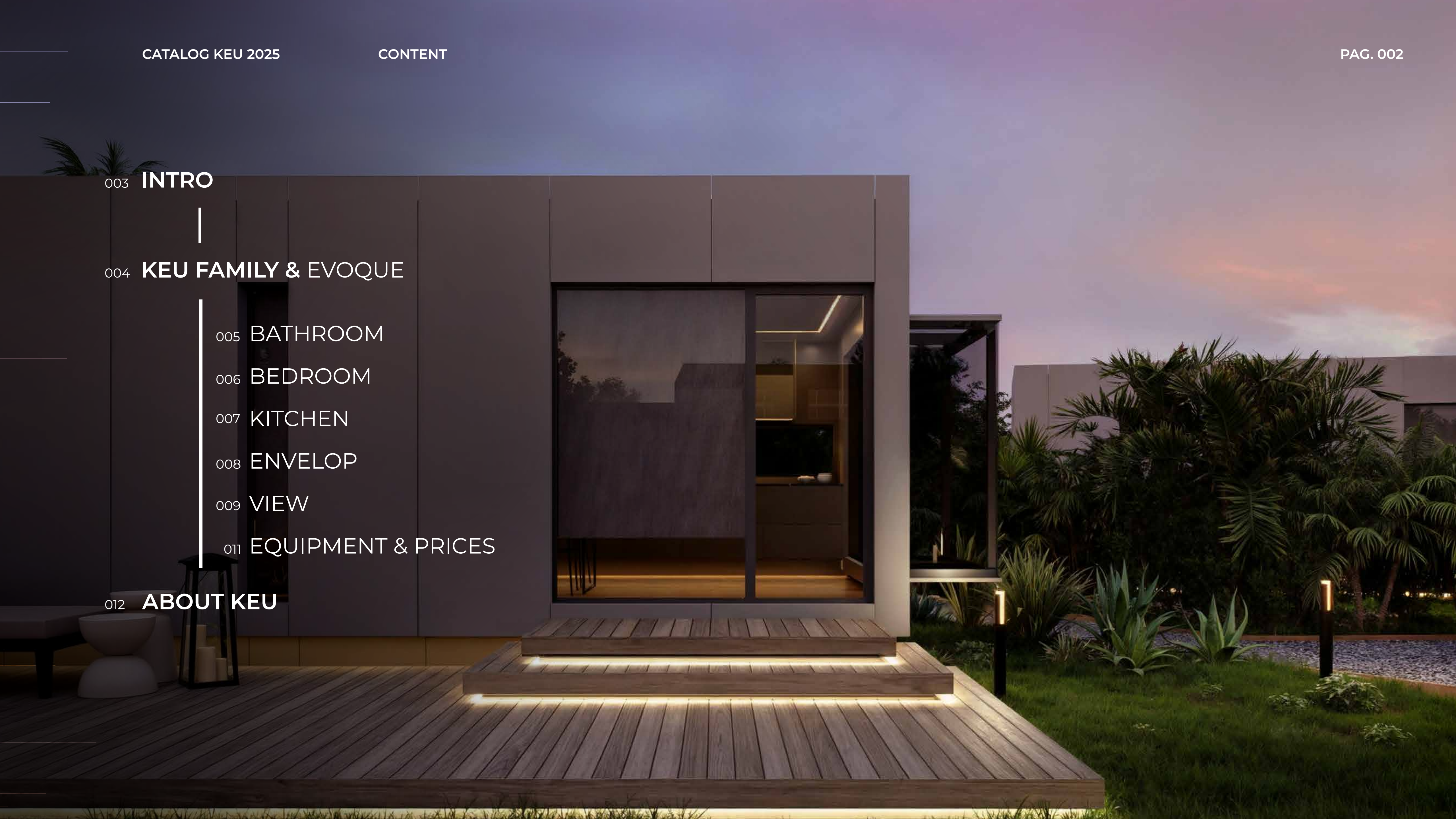
007 KITCHEN

008 ENVELOP

009 VIEW

011 EQUIPMENT & PRICES

012 **ABOUT KEU**





# YOUR HOME ANYWHERE

**AT KEU, WE REDEFINE LUXURY LIVING.**

Inspired by the design and engineering of the most exclusive nautical world, we have created a collection of prefabricated homes that blend technical precision with sophisticated design. Our homes are uniquely adaptable to any location, whether it be by the coast, in the mountains, or within an urban environment. KEU offers more than just a place to live; it embodies a lifestyle of elegance, innovation, and exclusivity.





# FAMILY & EVOQUE

ESSENTIAL: \$170,000

CONFORT: \$200,000

LUXURY: \$240,000

LEARN MORE PAG. 011





# BATHROOM

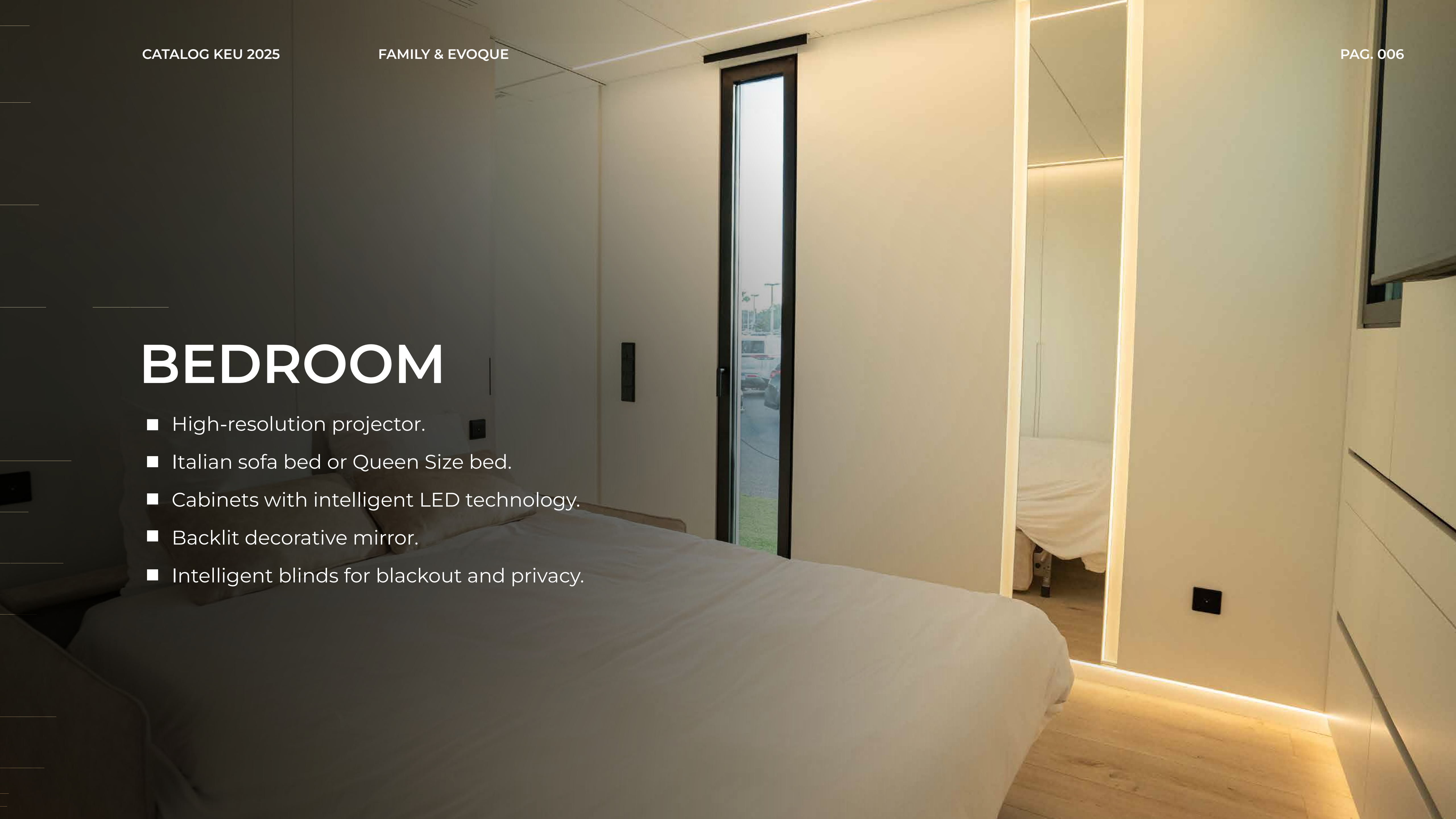
- Intelligent blinds for blackout and privacy.
- Large-format Italian porcelain shower cladding.
- Bathroom cabinet with integrated Italian porcelain sink.
- Built-in faucets from the prestigious brand Roca.
- Wall-hung toilet by Roca.
- Custom-made floor-to-ceiling glass shower screen.





# BEDROOM

- High-resolution projector.
- Italian sofa bed or Queen Size bed.
- Cabinets with intelligent LED technology.
- Backlit decorative mirror.
- Intelligent blinds for blackout and privacy.





# KITCHEN

- Suspended Italian design kitchen.
- Italian porcelain countertop with integrated porcelain sink.
- Appliances from the prestigious brands Bosch or Siemens.
- Faucets by Roca.
- Decorative structure with glass shelves and concealed extractor.

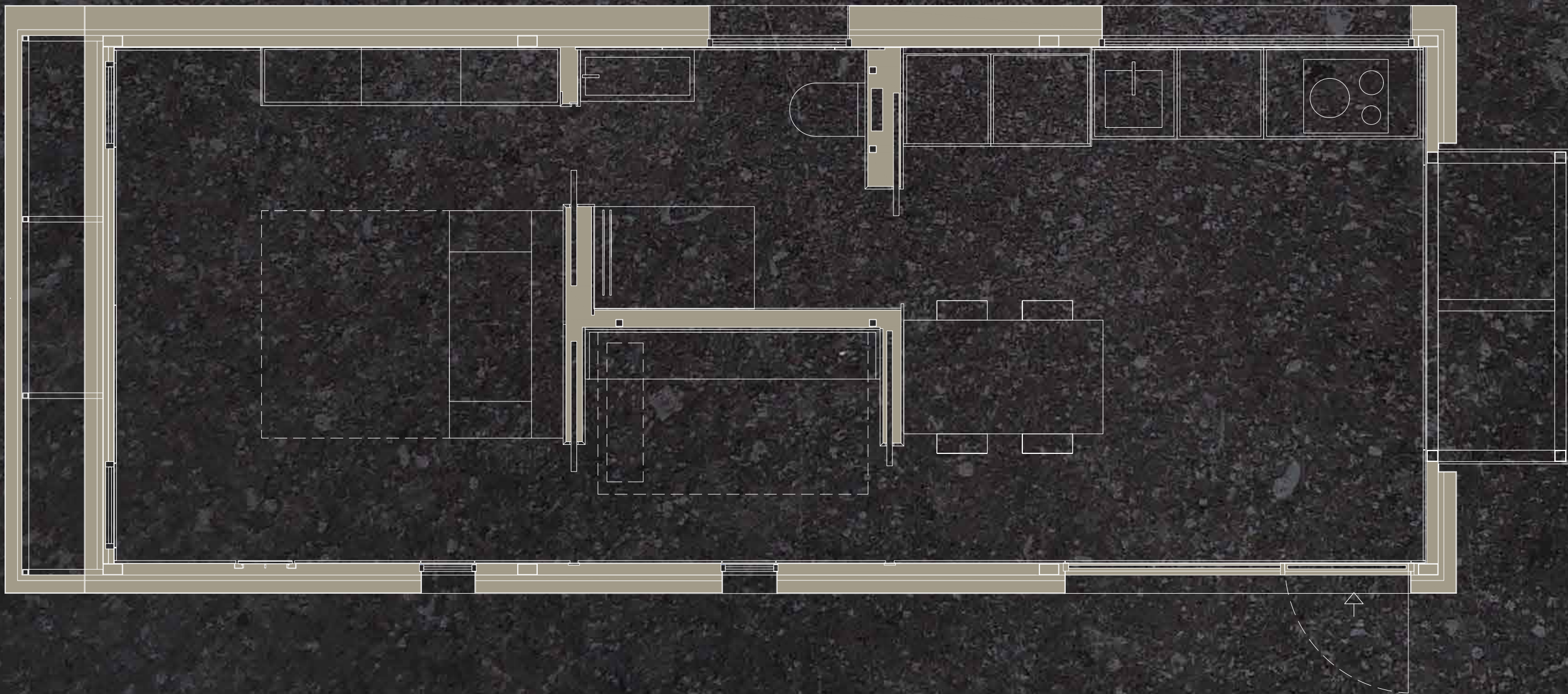


# ENVELOPE

- Flooring: Water-resistant wood-look flooring.
- Walls and Ceilings: Premium lacquered marine board finish, resembling the interior of a yacht, with concealed blinds integrated into ceiling slots.
- Windows: High-quality lacquered aluminum, 65 mm thick, with security glass featuring solar control and low emissivity
- Thermal Insulation: 4-inch (100 mm) facade insulation and 8-inch (200 mm) roof insulation to provide exceptional thermal efficiency..



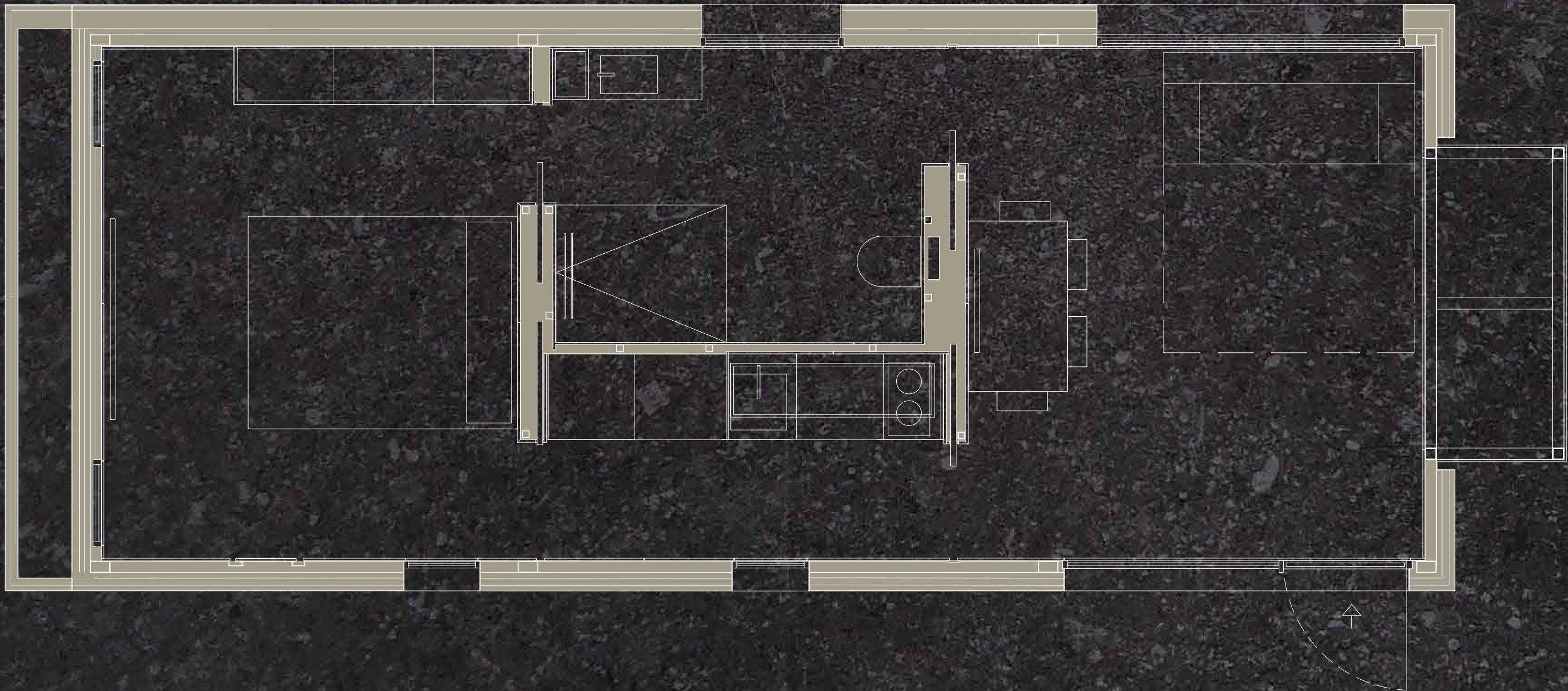




**keu** FAMILY

LENGTH	36' 1"	11 M
WIDTH	13' 7"	4,12 M
HEIGHT	12'	3,67 M
WEIGHT	26455 LB	12.000 KG
SPACE LIVING	409 FT <sup>2</sup>	38 M <sup>2</sup>
GROSS AREA	473 FT <sup>2</sup>	44 M <sup>2</sup>





**keu** EVOQUE

LENGTH	36' 1"	11 M
WIDTH	13' 7"	4,12 M
HEIGHT	12'	3,67 M
WEIGHT	26455 LB	12.000 KG
SPACE LIVING	409 FT <sup>2</sup>	38 M <sup>2</sup>
GROSS AREA	473 FT <sup>2</sup>	44 M <sup>2</sup>



ESSENTIAL

\$170.000  
INCLUDES ▼

- EQUIPPED KITCHEN
- AIR CONDITIONING
- FULL BATHROOM
- WARDROBES
- STAIRCASE WITH BASIC ACCES
- HURRICANE PROT.

CONFORT

\$200.000  
INCLUDES ▼

- EQUIPPED KITCHEN
- AIR CONDITIONING
- FULL BATHROOM
- PROJECTOR/TV
- HURRICANE PROT.
- BEDROOM BLACKOUT SYSTEM
- WARDROBES
- ITALIAN SOFA
- INCLASS CHAIRS
- EXTERIOR LADDER
- OUTDOOR LED

LUXURY

\$240.000  
INCLUDES ▼

- EQUIPPED KITCHEN
- AIR CONDITIONING
- FULL BATHROOM
- PROJECTOR/TV
- HURRICANE PROT.
- BEDROOM BLACKOUT SYST.
- WARDROBES
- ITALIAN SOFA
- INCLASS CHAIRS
- OUTDOOR LED
- OUTDOOR DECK (350 FT²)
- HANSGROHE TAPS
- LRG FORMAT PORCELAIN
- SHOWER CABIN
- PREMIUM SHOWER SCREEN
- FROM FLOOR TO CEILING
- UPGRADE OF PREMIUM
- MIELE BRAND ELECTRONIC
- APPLIANCES PRE-INSTALLATION OF SECURITY CAMERAS

FAMILY & EVOQUE