



keuEVOQUE

CATALOG 2025

Smart Living, Anywhere You Need It

YOUR HOME ANYWHERE

At Keu, we understand that a home isn't a fixed point on the map, but rather an experience that evolves with you: with your pace, your surroundings, and your way of living. Inspired by the precision of nautical design and the calm of minimalist architecture, we create spaces that blend with nature, the city, and silence.

Keu Evoque retains the understated elegance of the Family model, but offers a new interior design logic: designed for those who value fluidity between spaces, visual connection, and an open, serene, and contemplative atmosphere.



The layout has been redesigned for those who value spatial fluidity, visual connection between spaces, and a more open and contemplative atmosphere.





At Keu, quality is not an added value: it is the starting point.

Every material we choose is designed to age beautifully: woods treated with nautical precision, glass that expands natural light, and finishes that invite you to stop, look, and touch.

We don't build generic spaces, but rather unique pieces that exceed conventional standards. Because for us, a home shouldn't just function: it should excite.



*We think of those who perceive the essential beyond the obvious:
The silent closure that doesn't interrupt, the living wood that breathes with its surroundings, the harmony of a space that doesn't seek prominence, but rather balance.*

***At Keu, it's not about selling houses.
It's about creating spaces that represent you.***

From the first meeting, we walk with you: we listen to your ideas, understand your priorities, and support you in every choice. Because choosing where and how to live isn't just a practical decision. It's a way of expressing who you are.



BATHROOM

The bathroom in **Keu Evoque** is enlarged and transformed.

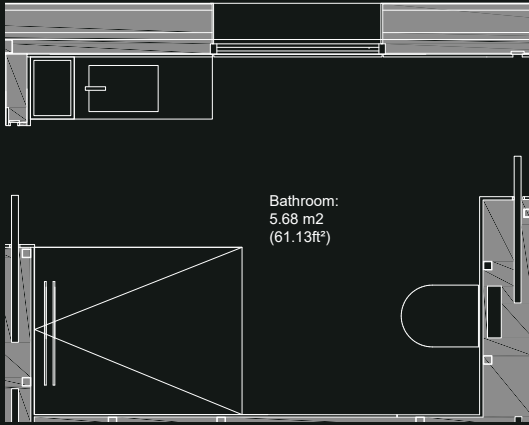
Unlike the Family model, where the bathroom is more compartmentalized, here it becomes a central space: larger, brighter, and more sensorial.

The spa-like shower, floating sink, backlit mirrors, and fine materials create an atmosphere of calm and sophistication.

Direct access from the bedroom reinforces the logic of spatial fluidity.

"The bathroom isn't just a corner. It's part of the emotional journey."



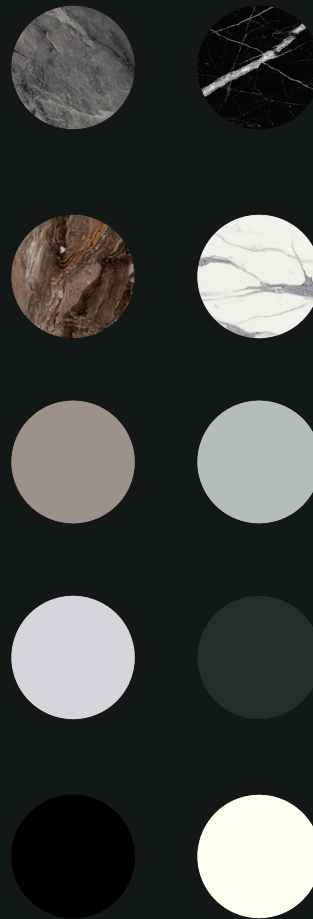


100% Customizable

Wall-mounted vanity unit with integrated porcelain sink

- Porcelain countertop
- Porcelain-clad shower with matte black enclosure
- Wall-hung toilet with built-in cistern
- Backlit mirror (31.5" x 31.5") (0.80 m x 0.80 m)
- Matte black faucets
- Integrated storage

SHOWER FINISH



TAPS COLLECTION





BEDROOM

Unlike the Family model, where the bedrooms are separated to preserve privacy, **Keu Evoque** offers a master bedroom that is more integrated into the larger space.

The floating bed becomes the visual center of the space, surrounded by natural light, neutral textures, and a fluid flow.

Built-in furniture, hidden closets, and direct access to the bathroom reinforce the sense of continuity.

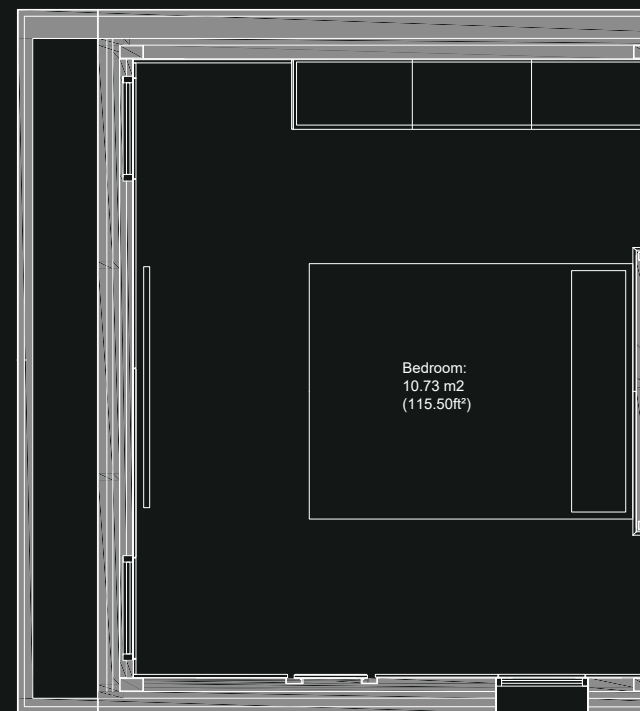
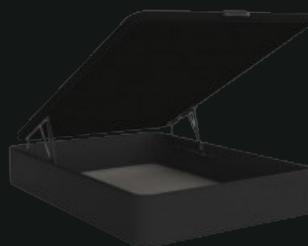
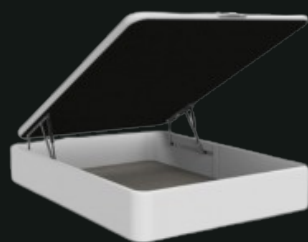
It's a space that isn't enclosed: it opens up to the surroundings and the experience.

"Here you don't sleep in a room. You rest in a landscape."

SOFA - BED



BED WITH CANOPY



100%
Customizable

- Queen-size pull-down bed with storage
- Built-in wardrobe with hanging rail

KITCHEN

In **Keu Evoque**, the kitchen is strategically located in the hallway that connects to the bedroom, creating a functional transition between private and social areas.

It is no longer integrated into the living room as in the Family model: it is now independent, allowing the social area to breathe with greater spaciousness and clarity.

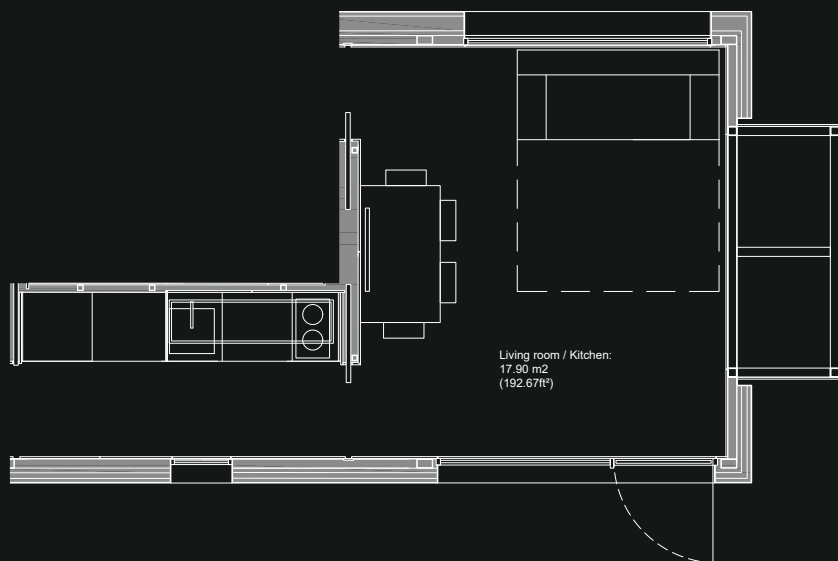
This separation generates two key benefits: a more discreet and efficient kitchen, and a more open, bright, and versatile living and dining area.

The kitchen, although compact, maintains its elegance: white marble, black faucets, integrated appliances, and hidden storage.

It is a space that accompanies without intruding, designed for those who value functionality without sacrificing aesthetics.

"Here, the kitchen doesn't interrupt. It gracefully retreats so the gathering can have its own setting."





100% Customizable

Suspended design on an exposed metal frame with backlighting.

Porcelain countertop with integrated 16" x 16" / 0.40 m x 0.40 m sink

Lacquered cabinetry with matching drawers and cabinets.

Includes:

- 2- or 4-zone ceramic cooktop (depending on configuration)
- Integrated extractor hood
- Integrated refrigerator
- Hidden waste bin
- Cutlery included
- Metal drawer organizers

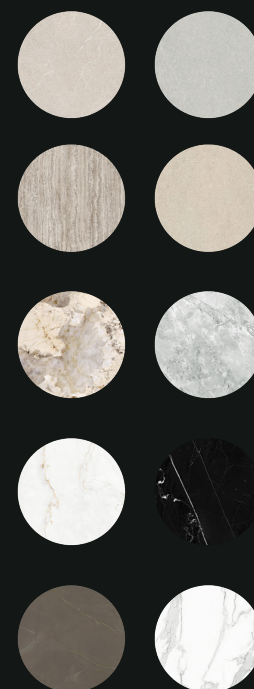
OUTDOOR CABINETS



TAPS COLLECTION



PORCELAIN TILES





keu360

Immerse yourself in the Keu experience from anywhere in the world.
Our 360° tour allows you to explore every corner of the module as if you were already
inside: feel the light, discover the materials, understand the layout.
It's not a simulation. It's the first step toward inhabiting your space.

START TOUR

Home automation

Because comfort can also be programmed.

Each piece is equipped with a comprehensive home automation system that transforms the way you live.

The light adapts to your mood. The temperature responds to your routine. Security activates without you noticing.

Everything works in harmony, with no visible cables or complex commands. Just you and your space, in sync.

"You don't need to touch a switch. Your home already knows what you need."

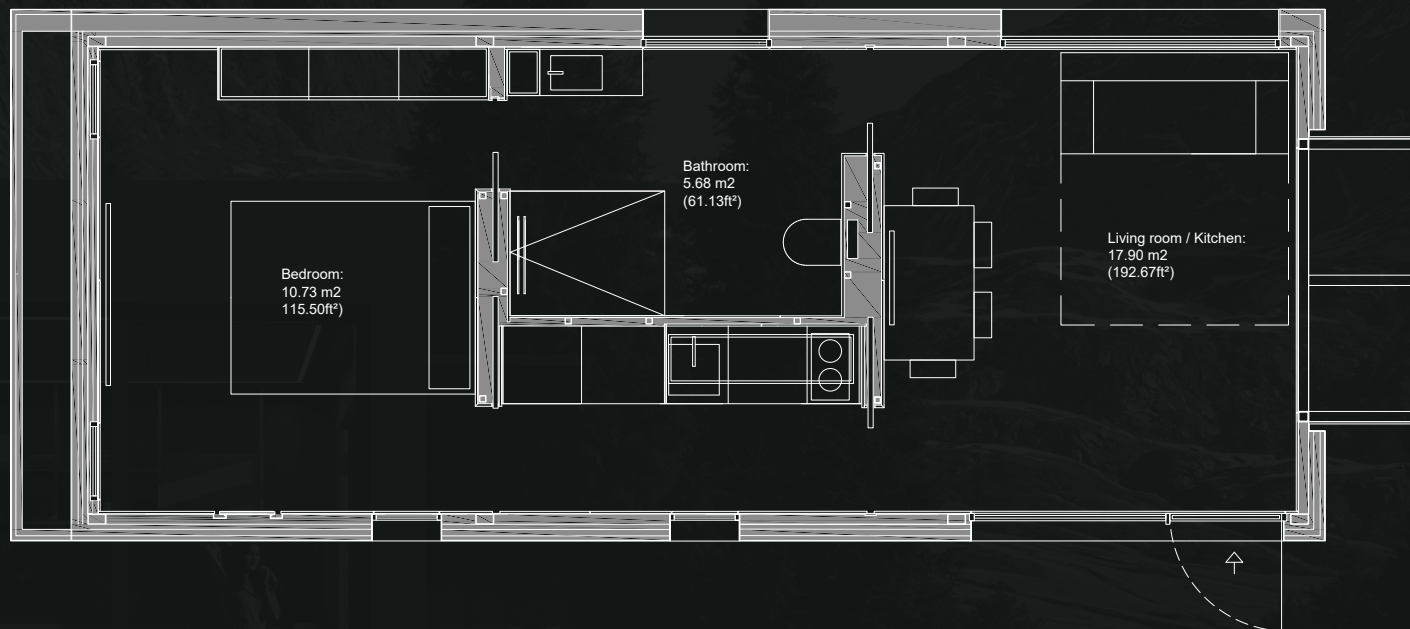
From your phone, tablet, or voice assistant, you can control:

- Ambient and spot lighting
- Smart curtains and blinds
- Air conditioning and ventilation
- Security and remote access
- Music, sound, and ambiance
- Preset scenarios for work, rest, or inspiration

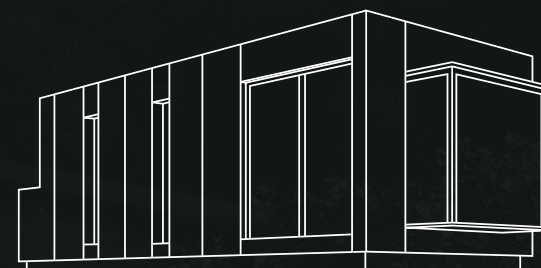


Keu Evoque redefines the internal logic of the module. The floor plan opens up, paths are simplified, and spaces are connected.

Unlike the Family model, which prioritizes compartmentalization, Evoque focuses on visual continuity and emotional breadth.



LENGTH	36' 1"	11 M
WIDTH	13' 7"	4,12 M
HEIGHT	12'	3,67 M
WEIGHT	26.455 LB	12.000 KG
SPACE LIVING	409 FT ²	38 M ²
GROSS AREA	473 FT ²	44 M ²



KEU ESSENTIAL

- FULLY EQUIPPED KITCHEN (Whirlpool Electros Series)
- FULL BATHROOM (Compact Shower Enclosure)
- CAT. 5 HURRICANE ANNATTO KIT (Only applicable in Caribbean areas)
- CABINETS
- AIR CONDITIONING (Johnson Model)
- BASIC ACCESS LADDER (Metal)

KEU CONFORT

- FITTED KITCHEN (Bosch Electros Series)
- FULL BATHROOM (Porcelain Shower Enclosure)
- CAT. 5 HURRICANE KIT (Only applicable in Caribbean areas)
- BACKLIT CABINETS
- AIR CONDITIONING (Mitsubishi Model)
- 55"/1.4 m SAMSUNG TV
- WINDOWS AND GLASS (High Energy Efficiency - Kline Series)
- BLACKOUT SYSTEM (Blinds + Pleated Blinds in Bedroom)
- EXTERIOR LIGHTING (Perimeter LED)
- EXTERIOR STAIRCASE 48.4 ft²/4.5 m² (Encapsulated decking)
- ITALIANO SOFA/BED
- INCLASS CHAIRS (Comfort Range)
- ELECTRONIC LOCK
- ULTRA-MATTE PET INT. FINISHES
- TECHNICAL COORDINATION SERVICE

KEU LUXURY

- FITTED KITCHEN (Miele Appliances Series)
- FULL BATHROOM (Floor-to-ceiling shower with alcove)
- HURRICANE KIT CAT. 5 (Only applicable in Caribbean areas)
- Backlit Wardrobes + Accessories (Cutlery Trays, Dividers, etc.)
- Automatic Air Conditioning (Mitsubishi Model)
- 55"/1.4 m Samsung TV + Sound System (Sonos)
- Carpentry and Armored Glass (High Energy Efficiency - Cortizo Series)
- Blackout System (Motorized Blinds + Pleated Blinds in Bedroom)
- Exterior Lighting (Perimeter LED)
- 355 ft²/33 m² Exterior Deck (Encapsulated Flooring)
- Italian Sofa/Bed
- Inclass Chairs (Premium Range)
- Electronic Lock
- Ultra-Matte PET Interior Finishes
- Technical Coordination Service + Project Manager

Personalized support at every stage

At Keu, we believe that every space begins with a conversation.

That's why, more than selling homes, we build relationships.

From the first contact, we support you in every decision: from imagining your ideal space to choosing the materials that will make it unique. Our team guides you throughout the entire process:

- Initial exploration: Together we visualize how Keu fits into your environment and lifestyle.
- Custom design: You select finishes, textures, and configurations with expert guidance.
- Production and assembly: We coordinate every detail so the process is smooth, transparent, and without surprises.
- Close after-sales service: We stay with you, because the connection doesn't end with delivery.



A modern building with a large glass window and a green lawn in the foreground. The building has a light blue or grey facade with vertical panels. The glass window reflects the surrounding environment. The foreground is a lush green lawn with some small plants and flowers. The sky is not visible, but the lighting suggests a bright day.

Available worldwide

KEU represents a transformative moment. Our designs are not limited by geography: KEU's adaptable, internationally shipped homes bring our dedication to design, quality, and sustainability to customers around the world.

Enter a new era of modular living with KEU and redefine the future of life.

A modern building with a dark, reflective facade is shown against a backdrop of a snowy mountain and evergreen trees. The building's surface reflects the surrounding environment. The text 'keuEVOQUE' is centered on the building's facade.

keuEVOQUE

CATALOG 2025

Smart Living, Anywhere You Need It